

# MAINEDOT's BRIDGE COLLEGE

## Wearing Surface/Deck Patching





# Richmond Dresden Bridge #2506



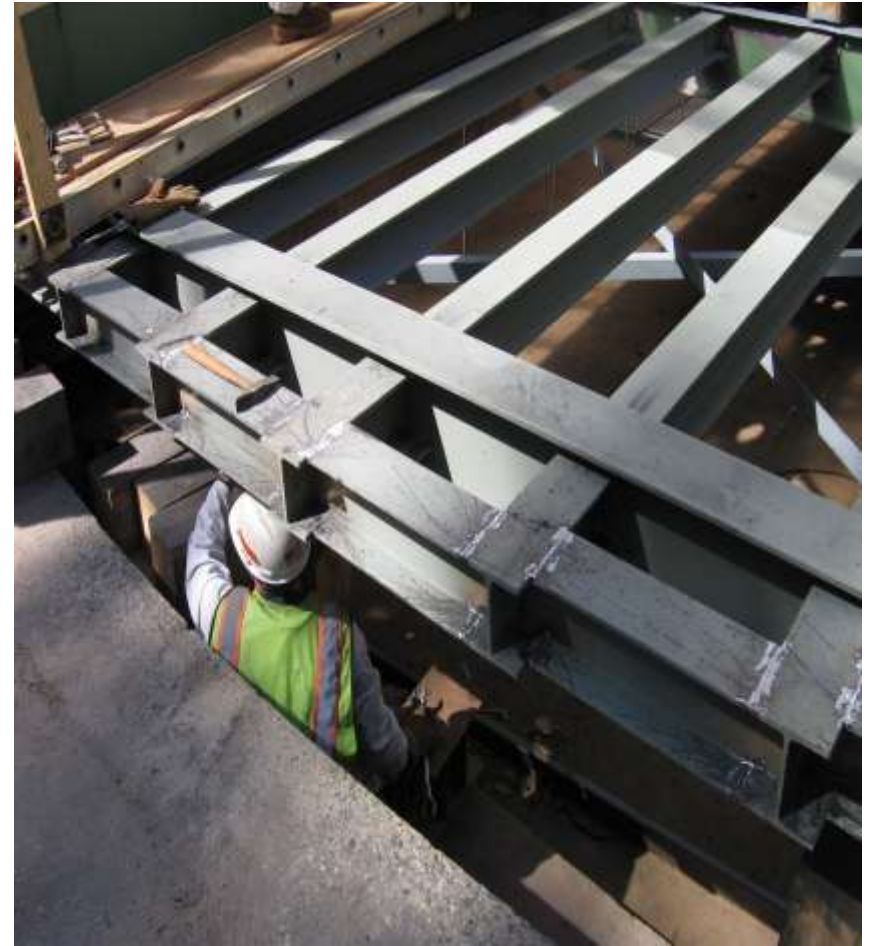
# Naples Songo Locks #2780



# Naples Songo Locks #2780



# Naples Songo Locks #2780



# Naples Songo Locks #2780



# Naples Songo Locks #2780





# Max Wilder Bridge



# Max Wilder Bridge



# Max Wilder Bridge



# Greene/Turner Bridge #3426



# Bridgton



# West Gardiner - Bridge 3331

NOTE: Proper way to patch would be to square cut, chip and fill



# Yarmouth – Main Street #5230



# Standish/E Limington #2252





# Standish/Bonnie Eagle #3406



# S. Portland – Interchange overpass (Lincoln St). #6199



# Portland – Veterans #3945



# Portland – 295SB over Wash Ave #0816



# Limington/E Limington #2252



# Lebanon – Grist Mill -#5258



# Kennebunk – Durrells #6049



# Kennebunk – Durrells #6049





# Kennebunk - Durrells # 6049



# Fore River Bridge #6281



# Falmouth – Lambert Street #5553



# Durham Bridge #3334



# Cathance Bridge #5123 Topsham



# Black Bridge #0323



# Black Bridge #0323



# Black Bridge #0323





# Biddeford – Bradbury #3080



# Biddeford – Bradbury #3080



# Barter's Island Bridge #2039



# 295 Portland #5616

